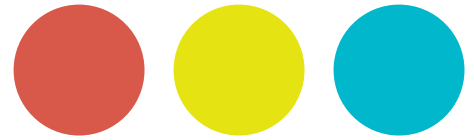
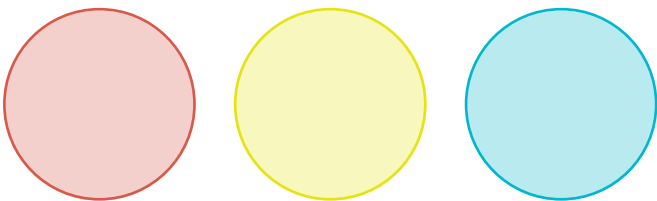


# Smart

## RangeVision 3D scanners



The most professional  
desktop 3D scanner



- Compact and portable
- Great variety of applications
- High quality 3D models
- Free software included
- Plug-and-play simplicity
- Works without a power source



### Catch the details with Smart 3D scanner

RangeVision Smart is the most professional desktop 3D scanner that stands out among competitive products with its versatility, budget price and handy packaging.

Smart 3D scanner is equipped with two industrial cameras and offers plug-and-play simplicity, detailed and full-colour scans of different-sized **objects from 2 cm to 2 m with accuracy up to 0,1 mm and resolution up to 0,12 mm**. Smart is lightweight, and equipped with a travel case for easy transportation. The scanner is mobile and can work without connecting to a power source up to one hour.

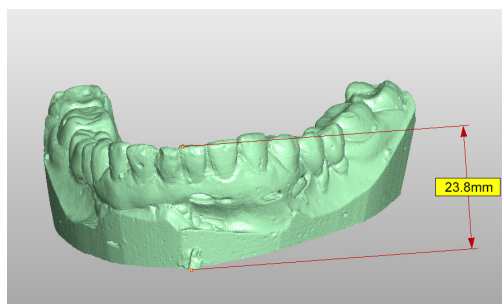
### Easy-to-use software

User-friendly software comes with free updates and is included in the price of the scanner. The output formats enable you to use all popular 3D modeling software for further processing – 3DsMax, Maya, Zbrush and others. Create 3D models, using its capabilities, such as:

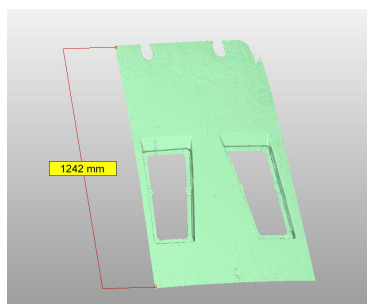
- automatical alignment of scans
- filling holes
- colour texture support
- .STL, .OBJ, .PLY, .ASCII output formats

### Great variety of applications

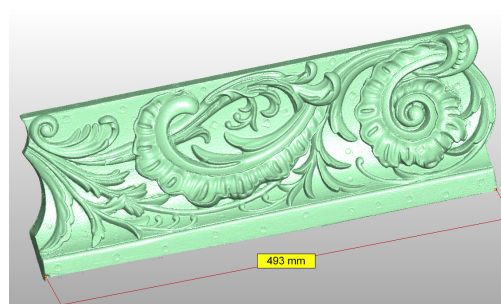
Smart 3D scanner fits perfectly for a variety of applications, such as:



Dentistry



Car tuning



Design and arts

### Technical specifications

Scanning zones	1	2	3
Scanning area (mm)	500 x 375 x 375	300 x 225 x 225	150 x 112 x 112
3D resolution (mm)	0,4	0,24	0,12
3D accuracy	0,2	0,1	0,1

